

The background features abstract, overlapping green geometric shapes, primarily triangles and polygons, in various shades of green, creating a modern and dynamic visual effect.

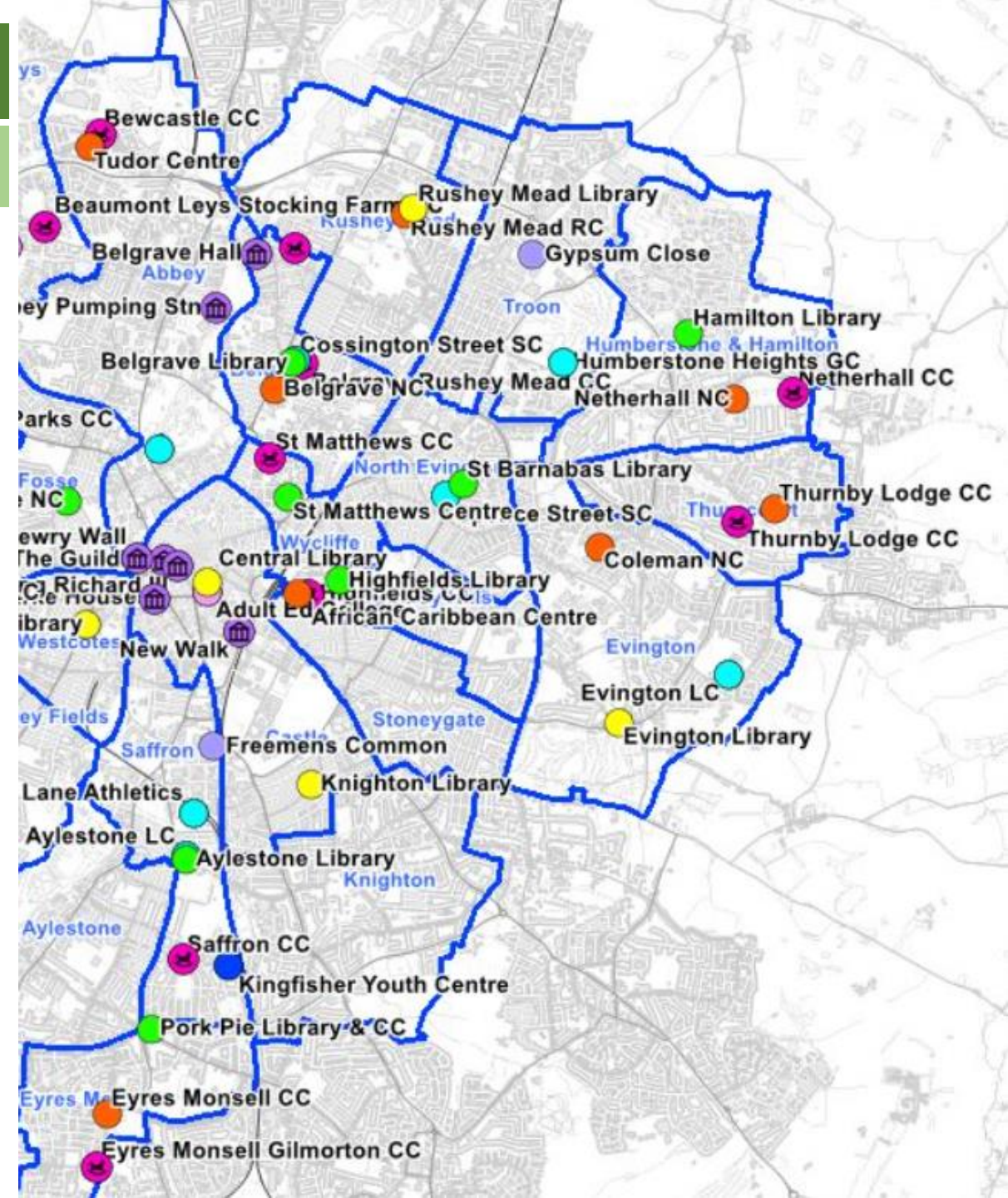
# Neighbourhood and Environmental Services JUNE 2025

Scrutiny Report

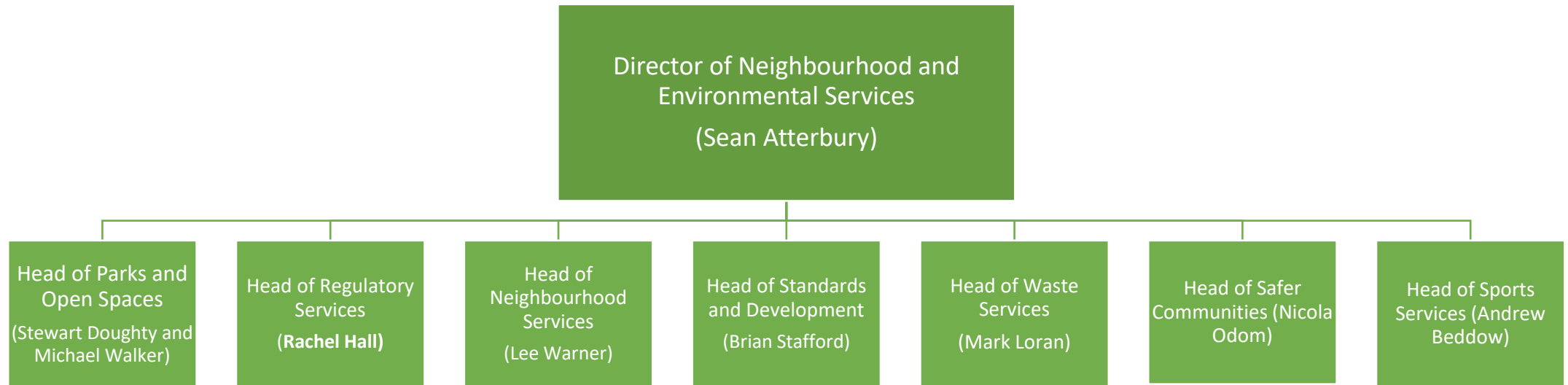
# Neighbourhood & Environmental Services

## Scrutiny Overview

- Is the largest division of City Development and Neighbourhoods
- Provides services that support residents across the city and in our communities
- Is not just about places, but also about people
- Contributes to the health and wellbeing of society through its services and the opportunities it provides



# Divisional Structure



# Neighbourhood & Environmental Services

## Scrutiny Overview

### Headline responsibilities

Parks and open spaces	Regulatory Services	Standards and Development	Neighbourhood Services	Waste Services	Safer Communities	Sports Services (Active Leicester)
<ul style="list-style-type: none"><li>• Trees</li><li>• Bereavement</li><li>• Volunteers</li><li>• Grounds maintenance</li><li>• Street cleansing</li></ul>	<ul style="list-style-type: none"><li>• Trading standards</li><li>• Taxi</li><li>• Licensing and enforcement</li><li>• Private Sector Housing</li><li>• Selective Licensing</li><li>• Food</li><li>• Noise</li></ul>	<ul style="list-style-type: none"><li>• Allotments / community growing spaces</li><li>• City Wardens</li><li>• Fly tipping</li><li>• EnviroCrime</li><li>• Landscape development</li><li>• Pest and Dogs</li></ul>	<ul style="list-style-type: none"><li>• Library services</li><li>• Reader development</li><li>• Childrens Book bus</li><li>• Neighbourhood Centres</li><li>• Ward funding schemes</li></ul>	<ul style="list-style-type: none"><li>• Biffa PFI contract</li><li>• Household waste site operations</li><li>• Bulky waste administration</li><li>• Waste Strategy development</li><li>• Waste education</li></ul>	<ul style="list-style-type: none"><li>• Community Safety Team</li><li>• CRASBU / HASBU team</li><li>• Prevent</li><li>• Changing futures</li><li>• Community Safety partnership</li></ul>	<ul style="list-style-type: none"><li>• Leisure Centre provision</li><li>• Athletics</li><li>• Outdoor recreation</li><li>• City wide strategy development</li></ul>

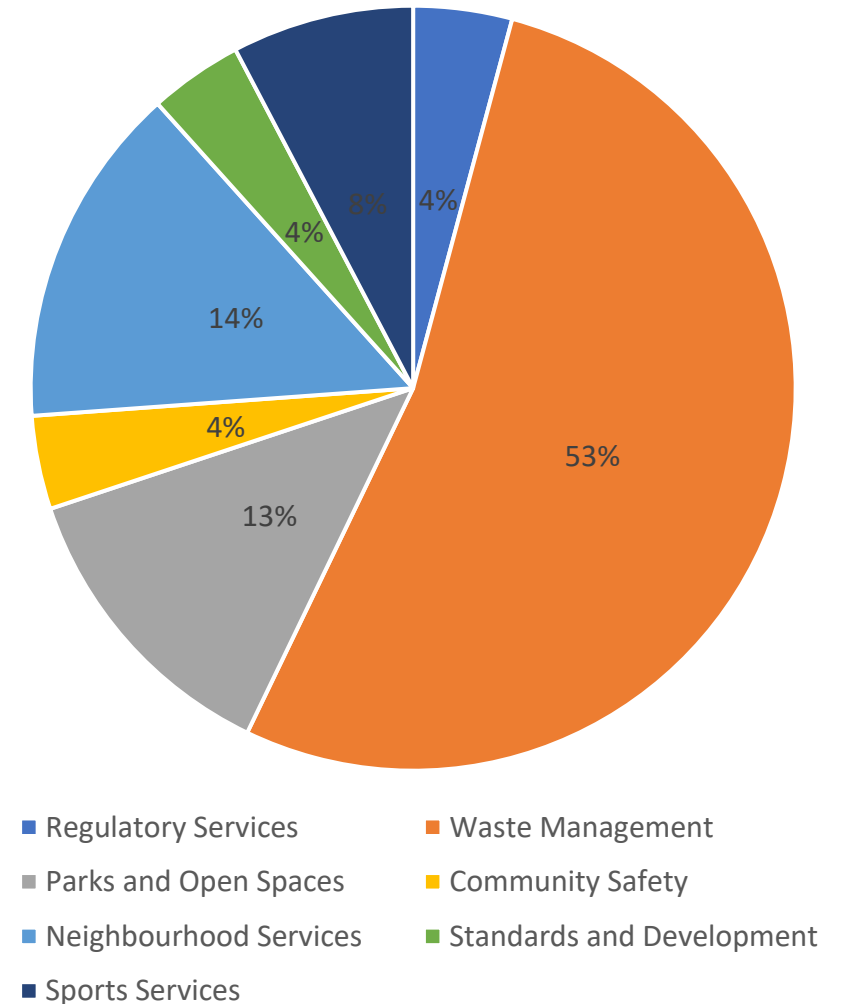
# Neighbourhood & Environmental Services

## Scrutiny Overview

### Net Budget breakdown

Service	
Regulatory Services	£1.9m
Waste Management	£24.1m
Parks and Open Spaces	£5.8m
Safer Communities	£1.8m
Neighbourhood Services	£6.6m
Standards and Development	£1.8m
Sports Services	£3.5m
<b>Overall</b>	<b>£45.5m</b>

Budget breakdown

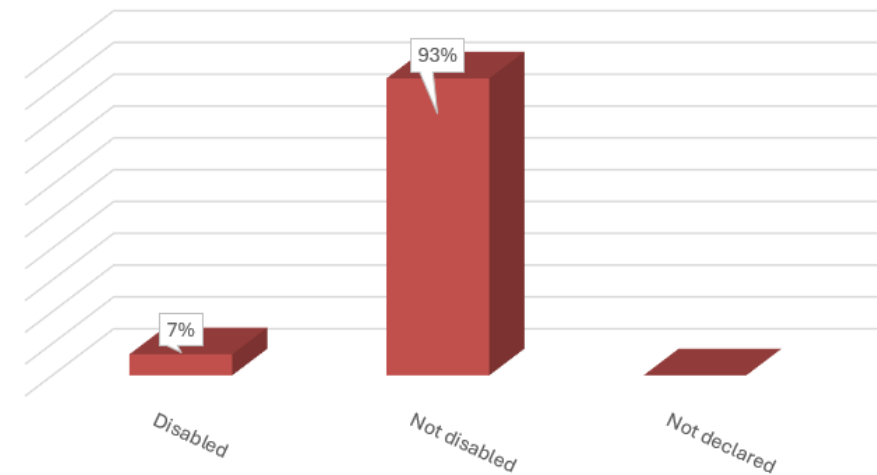
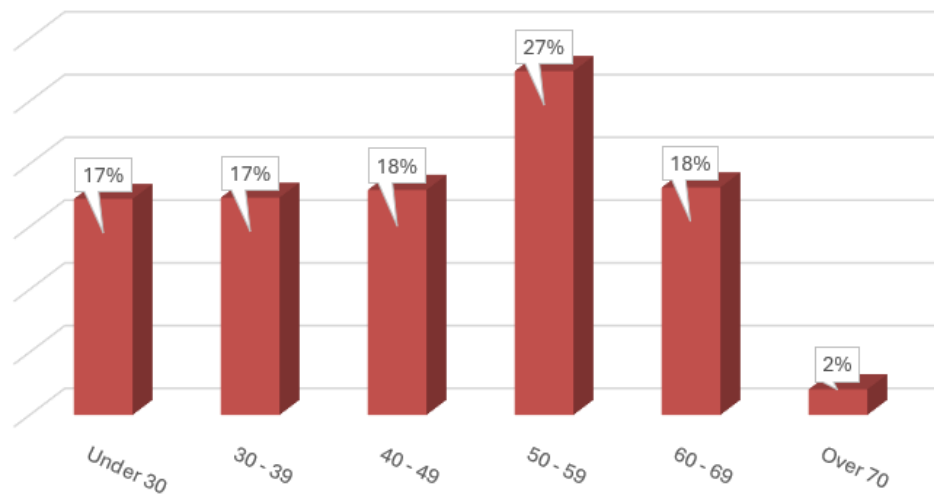
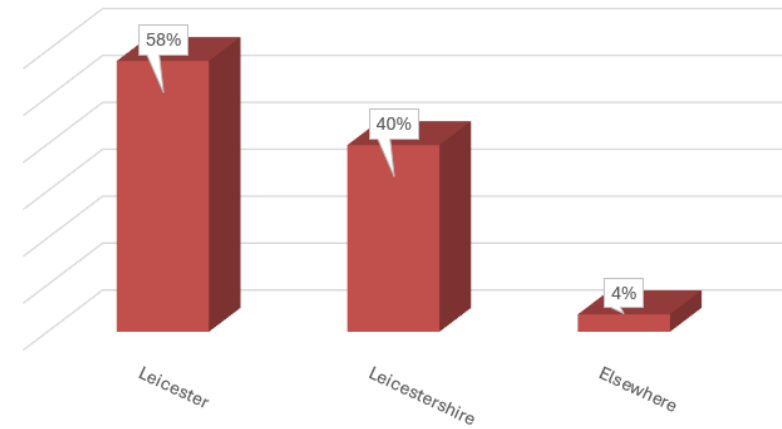
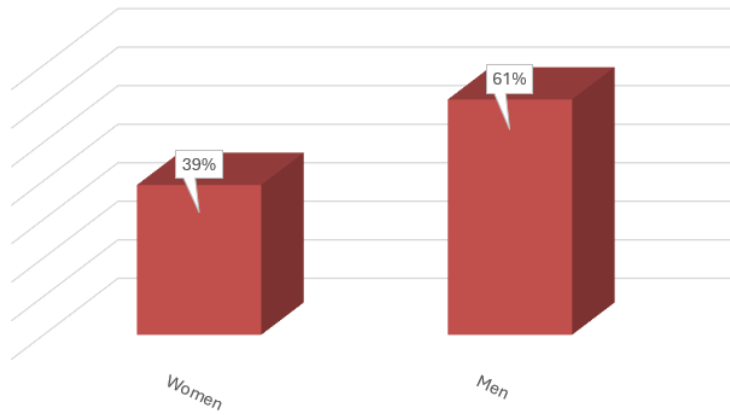


# Neighbourhood & Environmental Services

## Scrutiny Overview

# People profile

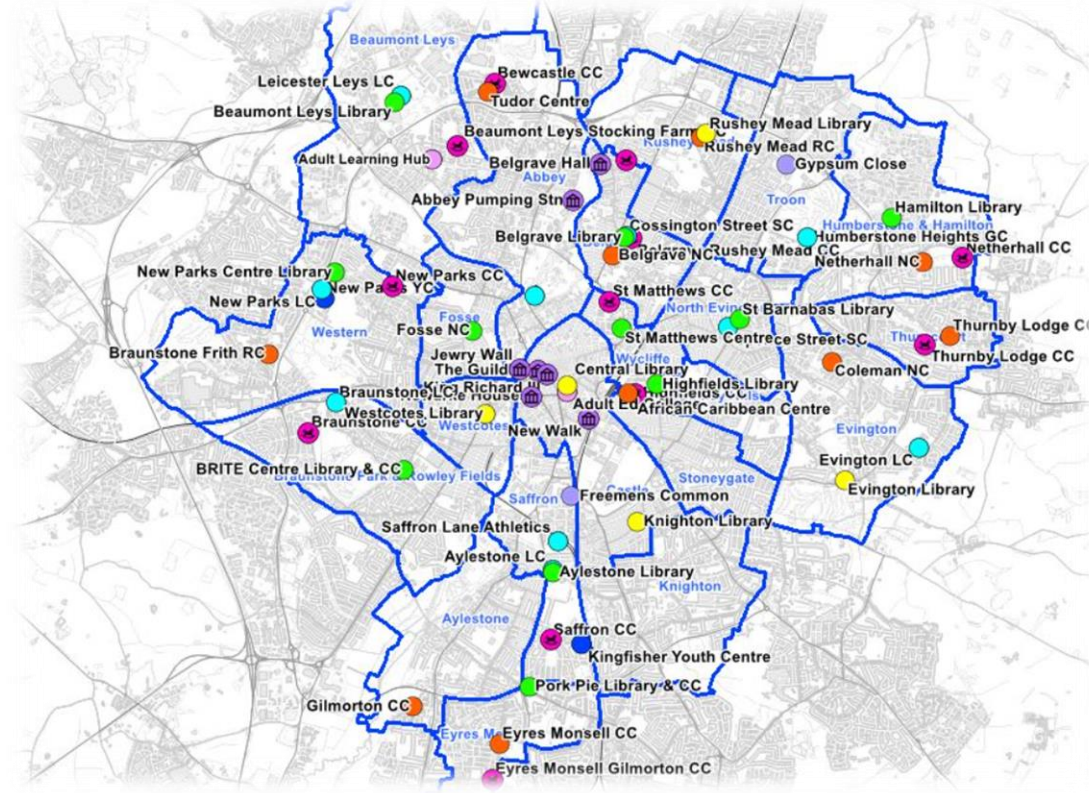
Headcount	975
FTE	786





# Neighbourhood & Environmental Services

## Scrutiny Overview



# Questions